

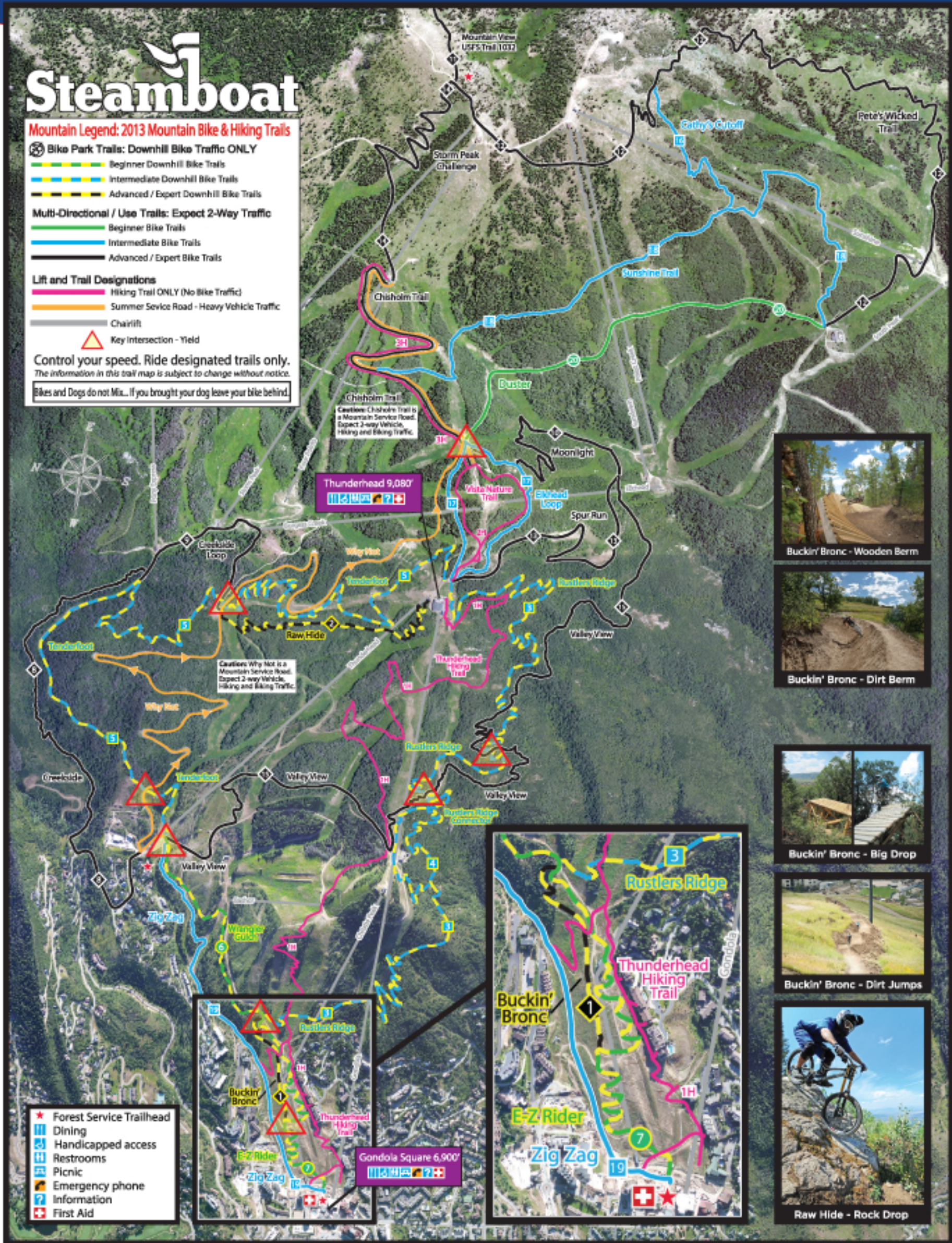
Steamboat

Mountain Legend: 2013 Mountain Bike & Hiking Trails

- Bike Park Trails: Downhill Bike Traffic ONLY**
- Beginner Downhill Bike Trails
 - Intermediate Downhill Bike Trails
 - Advanced / Expert Downhill Bike Trails
- Multi-Directional / Use Trails: Expect 2-Way Traffic**
- Beginner Bike Trails
 - Intermediate Bike Trails
 - Advanced / Expert Bike Trails
- Lift and Trail Designations**
- Hiking Trail ONLY (No Bike Traffic)
 - Summer Service Road - Heavy Vehicle Traffic
 - Chairlift
 - Key Intersection - Yield

Control your speed. Ride designated trails only.
The information in this trail map is subject to change without notice.

Bikes and Dogs do not Mix... If you brought your dog leave your bike behind!



Buckin' Bronc - Wooden Berm



Buckin' Bronc - Dirt Berm



Buckin' Bronc - Big Drop



Buckin' Bronc - Dirt Jumps



Raw Hide - Rock Drop



- Forest Service Trailhead
- Dining
- Handicapped access
- Restrooms
- Picnic
- Emergency phone
- Information
- First Aid

NO SMOKING

Steamboat is located in the Routt National Forest and is operated under permit from the Forest Service, USDA.

This map is an artistic representation. Degrees of difficulty ratings are relative to Steamboat Resort only.
© 2013 Steamboat Ski & Resort Corporation

Hours of Operation:

Gondola
Monday - Saturday: 10am - 4pm
Sunday: 9:30am - 4pm
Thursday & Friday: 10am - 7pm

Ticket Sales
Open Daily 9am - 5pm

Guest Services
Info Center and Lost & Found
Open Daily 10am - 5pm
Thursday & Friday until 6:30pm

Coca Cola Adventure Zone
Monday - Saturday: 11am - 5pm
Sunday: 10:30am - 5pm
Thursday & Friday: 11am - 7pm

Bike Rentals
Open Daily 9am - 5pm
Thursday & Friday until 8pm

This map may change, updated maps are available at the Gondola Base Area.

